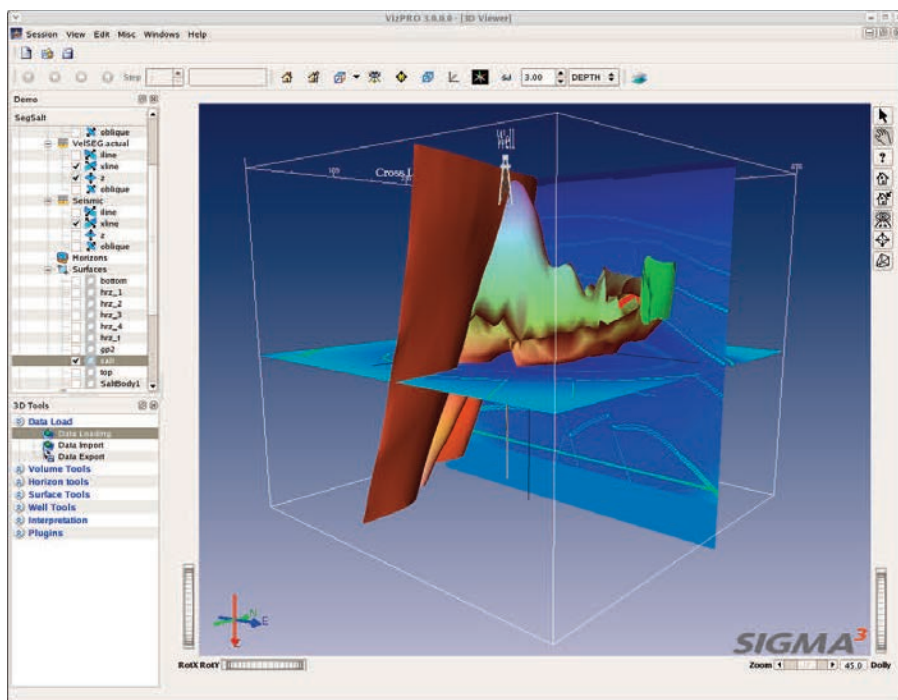


VizPRO™

VizPRO Visualization Solution

VizPRO™ is an advanced visualization tool for interactive interpretation, analysis and model building, and integrates with all data generated in the GeoPRO™ environment. VizPRO leverages the power of 3D visualization to provide interactive solutions to the most complex problems encountered in the oilfield, from seismic imaging to reservoir engineering.

VizPRO is designed to enable interactive rendering, analysis and complex mathematics on multiple seismic volumes, simultaneously. VizPRO allows the user to perform complex manipulation of large 3D data volumes, including merging, editing and smoothing. The toolkit includes advanced pore pressure analysis tools, including interactive centroid analysis.

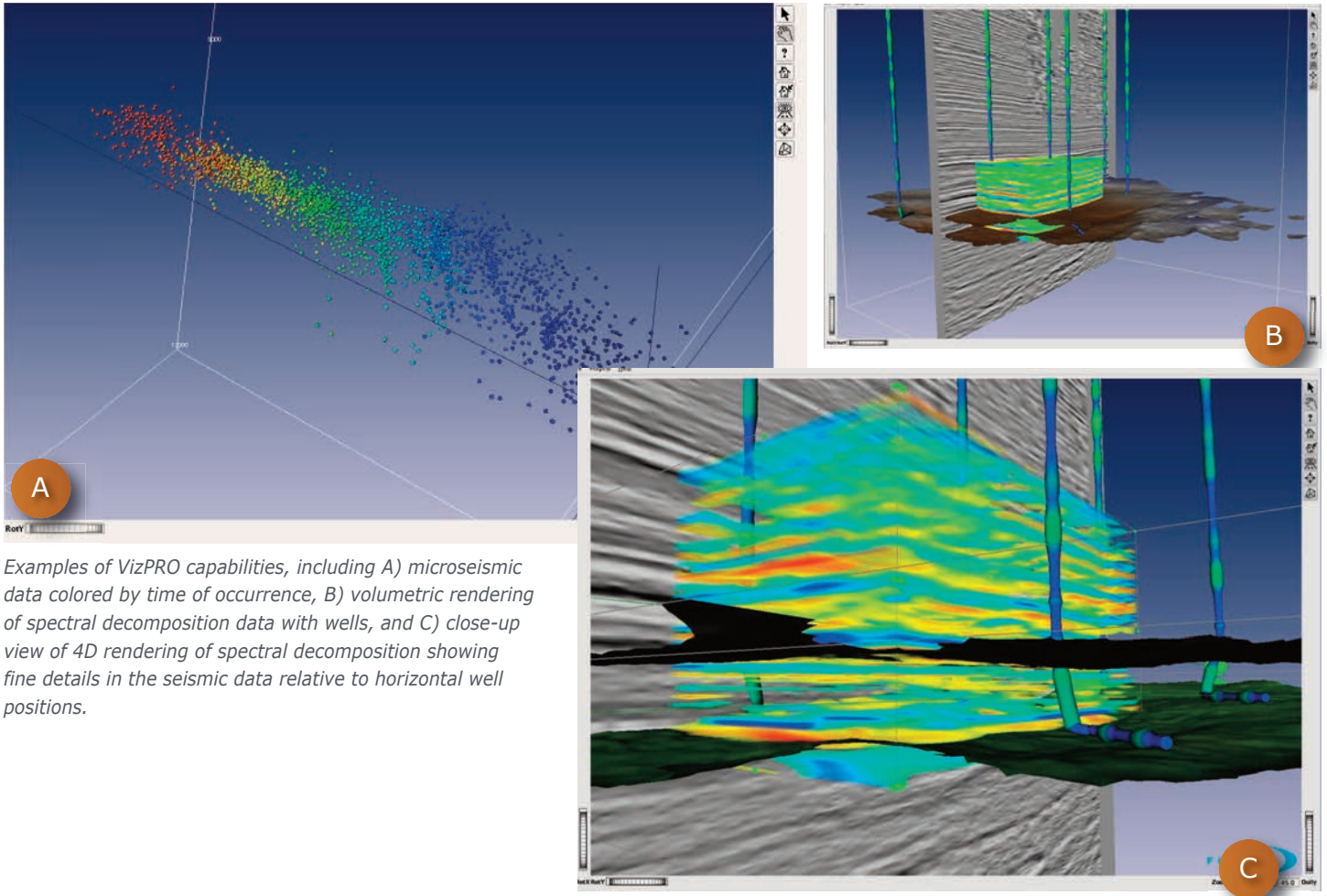


VizPRO interface showing 3D visualization of offshore salt body with velocity model, multi-Z salt body, and fault surfaces.

At a Glance

- Integrated visualization environment for 2D and 3D data and wellbore display (multi-volume rendering)
- Volume, slice, oblique slice and sub-cube display and rendering capability, with opacity controls
- 4D visualization capability for time-lapse, spectral rendering, etc.
- Full mathematical engine for complex computation on multiple 3D volumes
- Full 3D interpretation including multi-Z picking and surface generation
- 3D geobody creation and model building using surfaces (single value and multi-Z)
- 3D data manipulation including volume smoothing, volume merging and horizon-controlled processes
- 3D display of point data including microseismic events with event time controls
- Interactive 3D geopressure prediction and centroid modeling plug-in for pre-drill pressure prediction (PressurePRO™)

VizPRO provides rendering of 4D data sets, including time-lapse and spectral decomposition volumes. The toolkit also has the ability to display formation tops, microseismic events, and other complex data types, including display controls for time-sequential data.



Examples of VizPRO capabilities, including A) microseismic data colored by time of occurrence, B) volumetric rendering of spectral decomposition data with wells, and C) close-up view of 4D rendering of spectral decomposition showing fine details in the seismic data relative to horizontal well positions.

System Requirements

Hardware

- Intel Pentium 4 at 2.0 GHz or higher
- Minimum of 2GB RAM, 4GB (recommended)
- Minimum of 800MB disk space

Operating System

- Linux Redhat 4.7+, 5, 6 or equivalent O/S
- Minimum GNU libc version supported is 2.3.4 (maximum is 2.12)
- MySQL 5+ database server

For more information about how you can use VizPRO to streamline your workflows, contact SIGMA³ today!

info@sigmacubed.com
www.sigmacubed.com

SIGMA³ Integrated Reservoir Solutions
4700 West Sam Houston Parkway North,
Suite 150
Houston, TX 77041 USA
+1 281 363 8500

For worldwide locations visit:
www.sigmacubed.com

SIGMA³