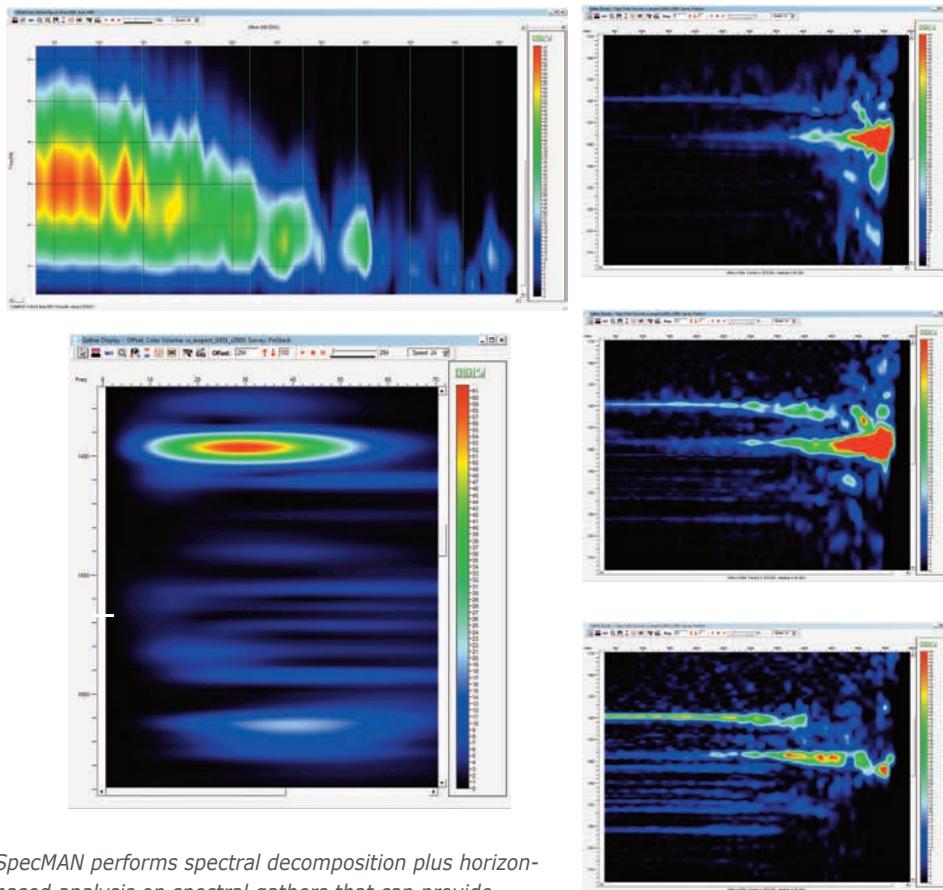


SpecMAN™

SpecMAN Spectral Decomposition Processing and Analysis

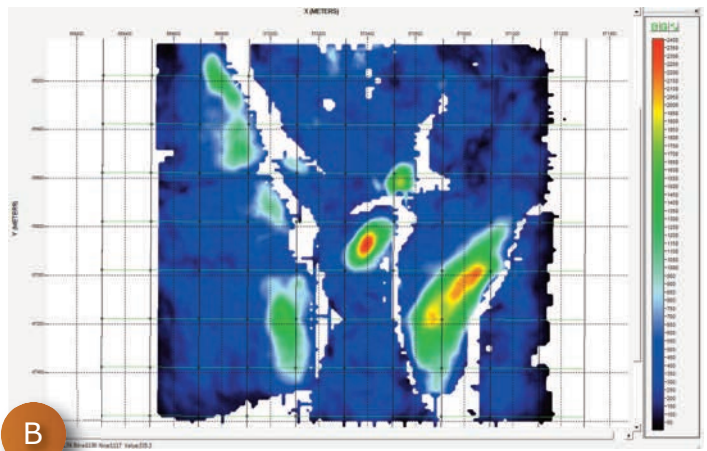
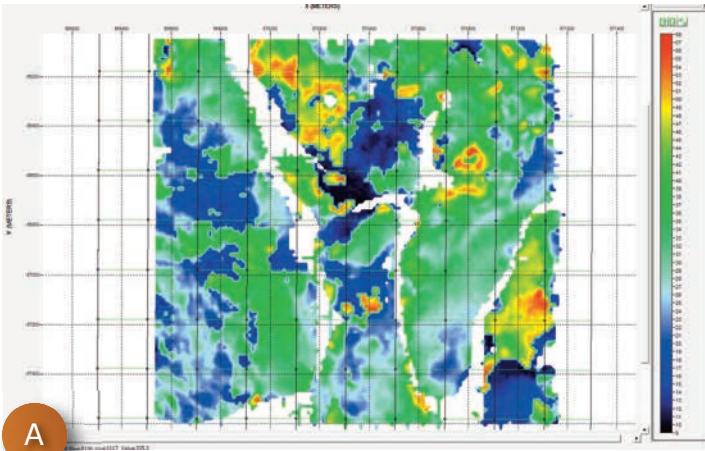
SpecMAN™ is a proprietary seismic spectral decomposition, AVO, inversion, and attribute analysis package. Seismic traces from post- and pre-stacked seismic data are analyzed in multiple dimensions. SpecMAN extracted attributes and mapped horizons are displayed in both cross-section and map views.



SpecMAN performs spectral decomposition plus horizon-based analysis on spectral gathers that can provide critical information on spatial variations of attributes. The colors on the displays show the linkages between the frequency gather locations and the spectra.

At a Glance

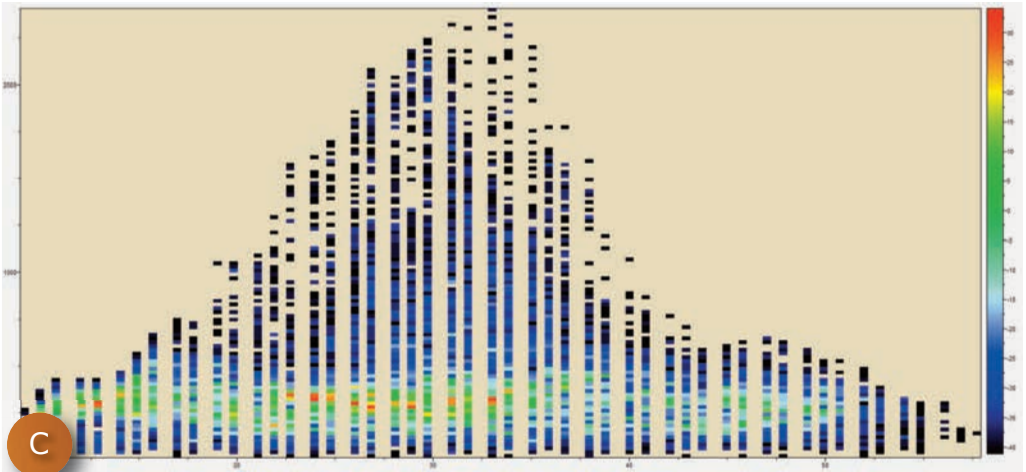
- Full SEG-Y data and well log data handling capability, including pre-stack data
- Spectral decomposition engine with most industry-standard algorithms
- Envelope and trace-mode spectral decomposition functionality
- Full analysis and attribute generation package for handling of 4D spectral volumes
- Capability to analyze both pre-stack and post-stack data, including cross-plots
- Database links to VizPRO™ 3D visualization toolkit for 4D rendering
- Add-on module for proprietary ExSpect™ spectral decomposition algorithm
- Add-on module for proprietary ThinMAN™ broadband spectral inversion algorithm



A

B

The new Cross-Plot feature allows user to view data as a collection of points for in-depth analysis. This example shows how A) peak frequency, and B) peak amplitude, are viewed in C) a cross-plot.



C

System Requirements

Microsoft Windows

- 2GB Memory (recommended)
- 32 bit or 64 bit Windows

Linux

- 2GB Memory (recommended)
- 32 bit or 64 bit Linux

For more information about how you can use SpecMAN to streamline your workflows, contact SIGMA³ today!

info@sigmacubed.com
www.sigmacubed.com

SIGMA³ Integrated Reservoir Solutions
 4700 West Sam Houston Parkway North,
 Suite 150
 Houston, TX 77041 USA
 +1 281 363 8500

For worldwide locations visit:
www.sigmacubed.com

