

GeoPRO™

GeoPRO Geophysical Platform

GeoPRO™ is an integrated XML-based software platform that runs on the LINUX operating system. The platform provides a software environment that includes the VizPRO™ visualization package, VelPRO™ a unique velocity analysis and model building toolkit, as well as Kirchhoff time and depth migration and Wave Equation migration.

GeoPRO has a full parallel processing capability to allow the user to implement migrations on LINUX clusters with custom node assignment on each specific job. The platform also provides a developer environment that allows for efficient implementation of the user's own software with full linkage to the visualization environment.



GeoPRO Data Framework

With advancements in technology, there is growing need for applications to share data with each other for an even better understanding of the data. Different applications use different databases, which complicates the communication problem.

The GeoPRO data framework provides a common layer between the applications and the actual data storage. All applications in the GeoPRO system communicate with the data through this layer, which forms a bridge between the applications and databases and allows any application to seamlessly communicate with any database. The framework also allows the applications to be independent of the underlying database.

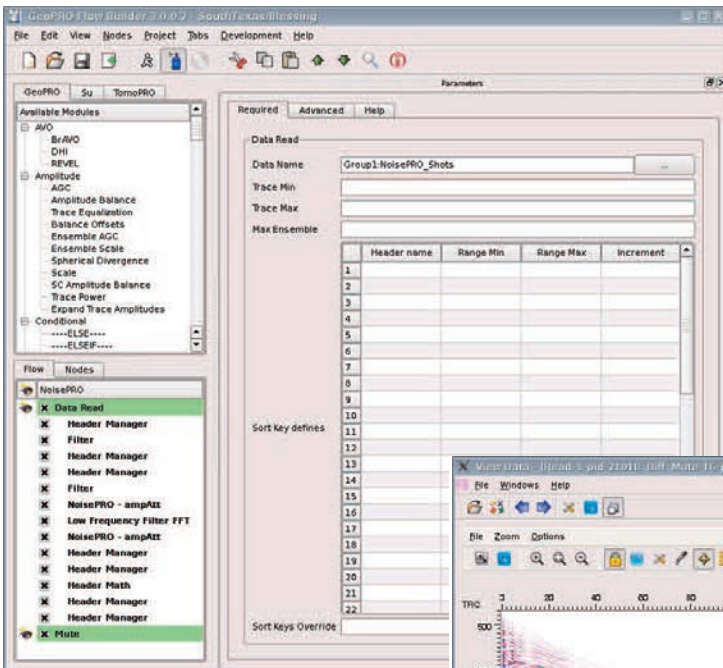
At a Glance

- Full 2D and 3D seismic processing functionality
- Interactive data loading and file handling through the SEGYPRO™ data viewing tool
- FlowBuilder™ allows design, parameterization and execution of complex multi-step workflows
- Fully parallelized using MPI and Spray & Gather techniques
- Hardware management via OpenPBS system
- Direct data linkages to VelPRO, TomoPRO™, ImagePRO™ and VizPRO tools
- Developer interface designed for efficient customization and plug-in implementation by clients

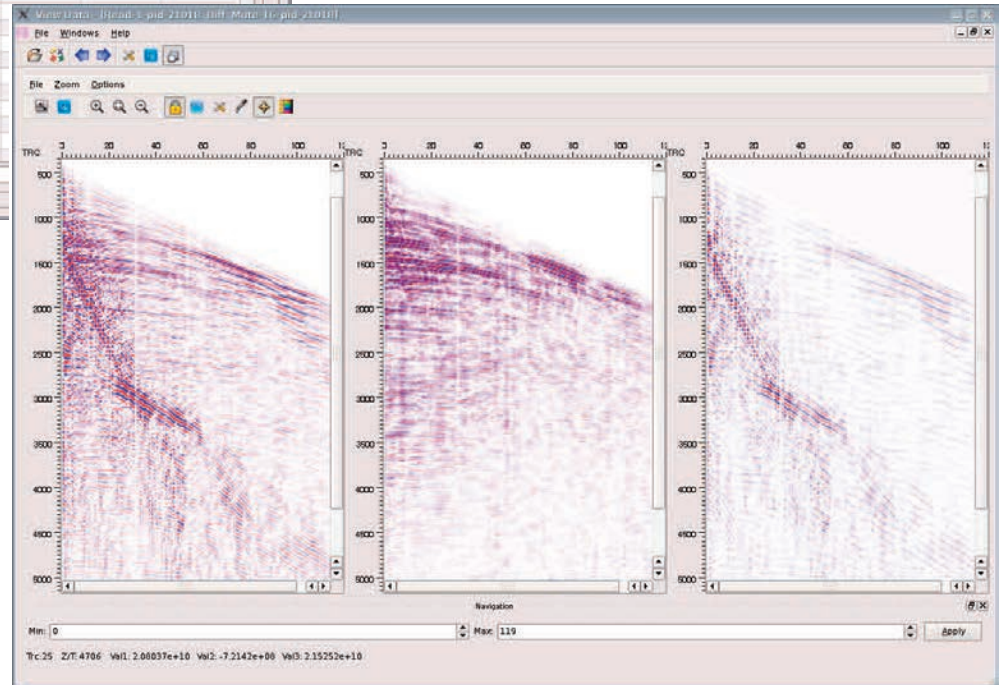
Processing System and Flow Builder

The Flow Builder is used for processing 2D and 3D seismic data. A user-friendly interface allows users to create and modify processing flows, and data visualization features enable users to view seismic data instantly.

- Supports data formats SEG Y, SU and SEP
- Allows parallelization of job flows
- Provides 2D data visualization tools
- Access to data catalog
- Supports 150+ processing modules



Sample Flow Builder processing flow for noise removal showing real-time output of data with before/after and difference.



System Requirements

Hardware

- Intel Pentium 4 at 2.0 GHz or higher
- Minimum of 2GB RAM, 4GB (recommended)
- Minimum of 800MB disk space

Operating System

- Linux Redhat 4.7+, 5, 6 or equivalent O/S
- Minimum GNU libc version supported is 2.3.4 (maximum is 2.12)
- MySQL 5+ database server

For more information about how you can use GeoPRO to streamline your workflows, contact SIGMA³ today!

info@sigmacubed.com
www.sigmacubed.com

SIGMA³ Integrated Reservoir Solutions
4700 West Sam Houston Parkway North,
Suite 150
Houston, TX 77041 USA
+1 281 363 8500

For worldwide locations visit:
www.sigmacubed.com

SIGMA³